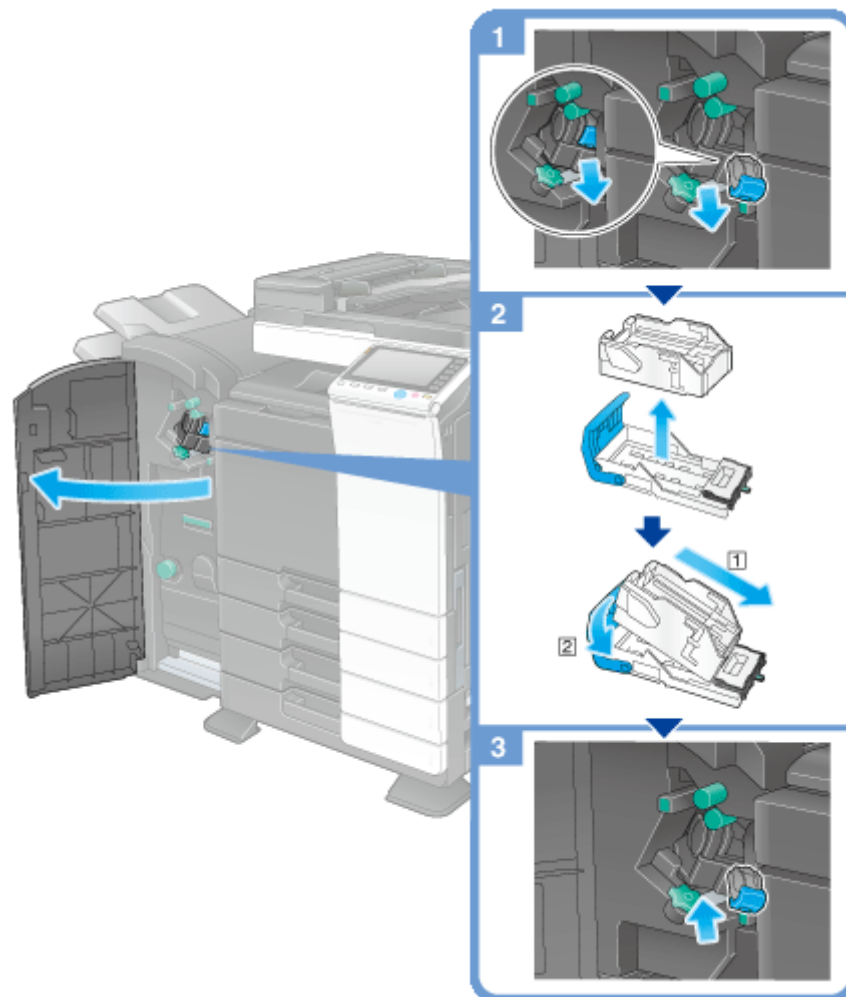


Finisher FS-534



Tips

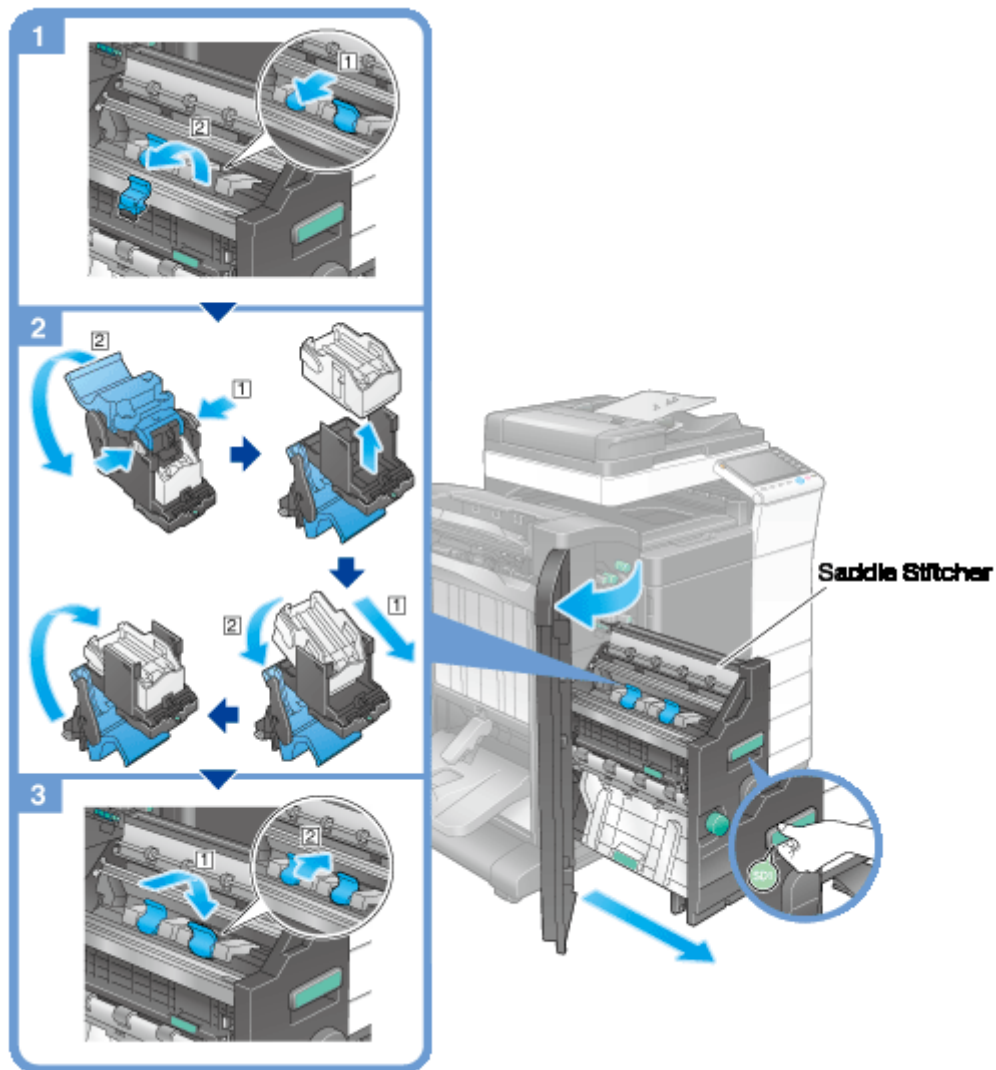
The figure shows a **Finisher FS-534** with **Saddle Stitcher SD-511** and **Punch Kit PK-520** installed.
Do not remove staples that remain in the machine. Otherwise, the stapling function will activate but no sheets will be stapled.



NOTICE

Be sure to replace the **Staple Cartridge** after the relevant message has appeared. If a **Staple Cartridge** is removed before the relevant message appears, it may result in a failure.

Saddle Stitcher SD-511



Tips

The figure shows a **Finisher FS-534** with **Saddle Stitcher SD-511** and **Punch Kit PK-520** installed. Do not remove staples that remain in the machine. Otherwise, the stapling function will activate but no sheets will be stapled.



NOTICE

When moving the **Saddle Stitcher**, be sure to only hold the handle. Otherwise, your hand or finger may get caught in the machine.

Be sure to replace the **Staple Cartridge** after the relevant message has appeared. If a **Staple Cartridge** is removed before the relevant message appears, it may result in a failure.