

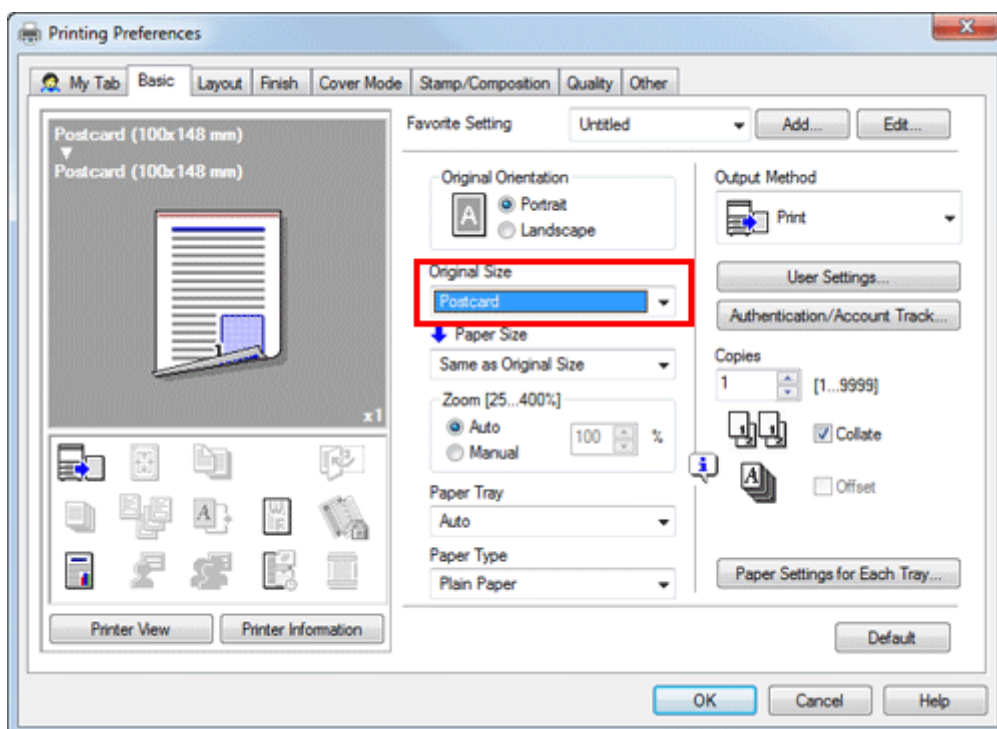
Q1. Can I print data on an envelope or postcard?

Operation procedure

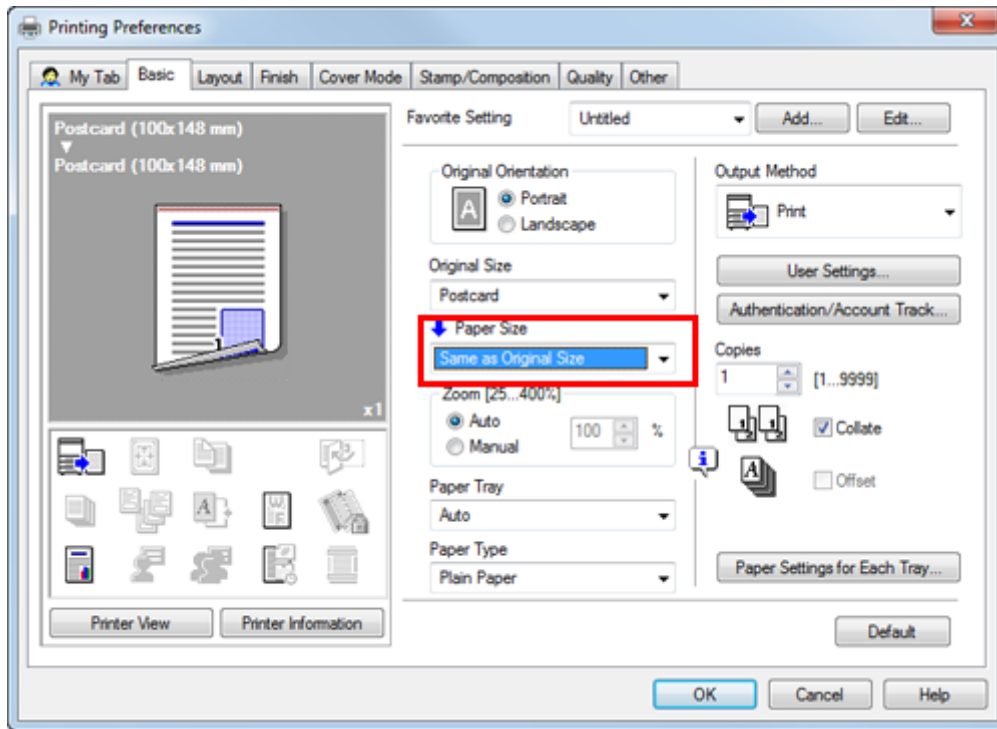
1. Open the file in the application, and click [File]. Then click [Print] from the menu.
2. Select this product from [Select Printer] (or [Printer Name]) then click [Preferences] (or [Properties]).

In [Original Size] on the [Basic] tab, select [Envelope] or [Postcard].

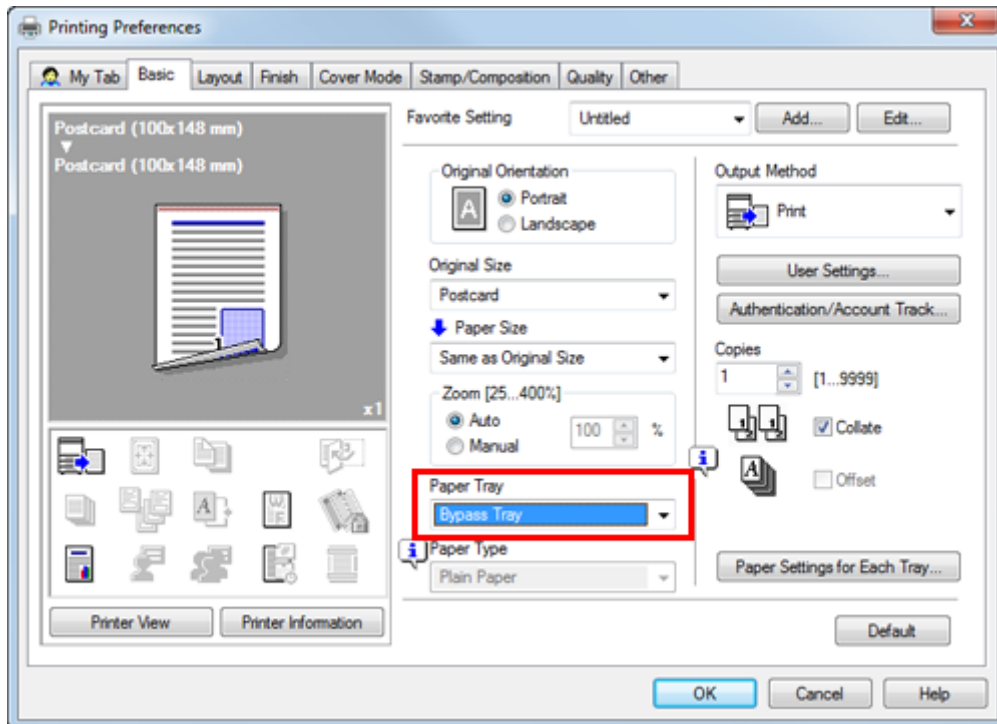
➔ Various sizes of envelopes are available. Select the correct paper size for the envelopes you have loaded.



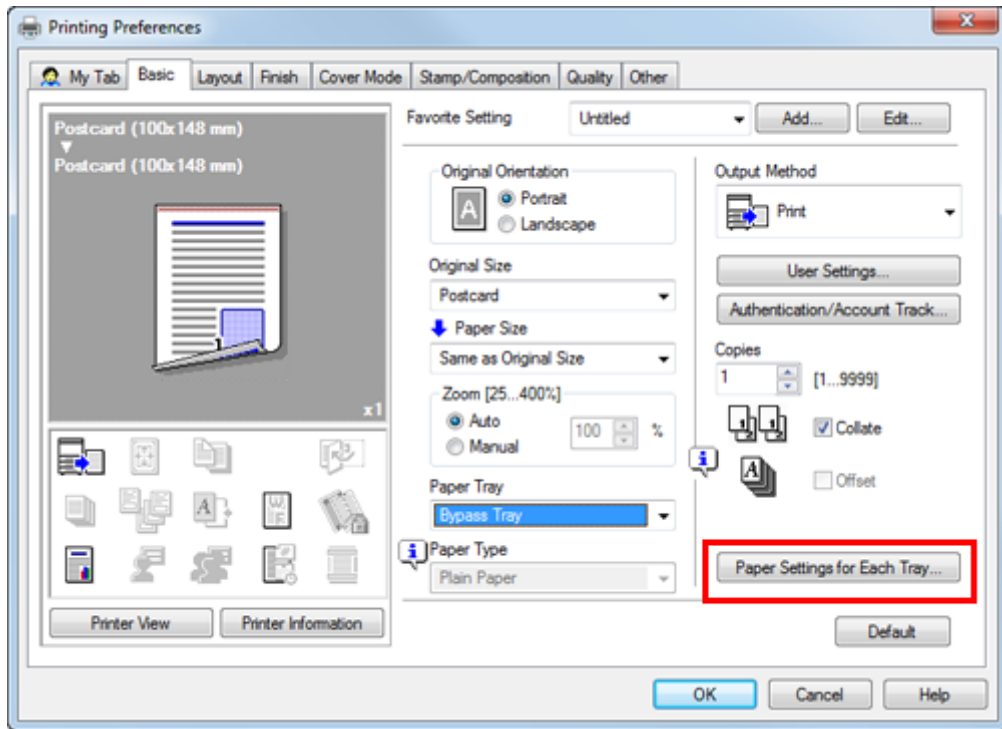
Check that [Paper Size] is set to [Same as Original Size].



Select [Bypass Tray] from [Paper Tray].

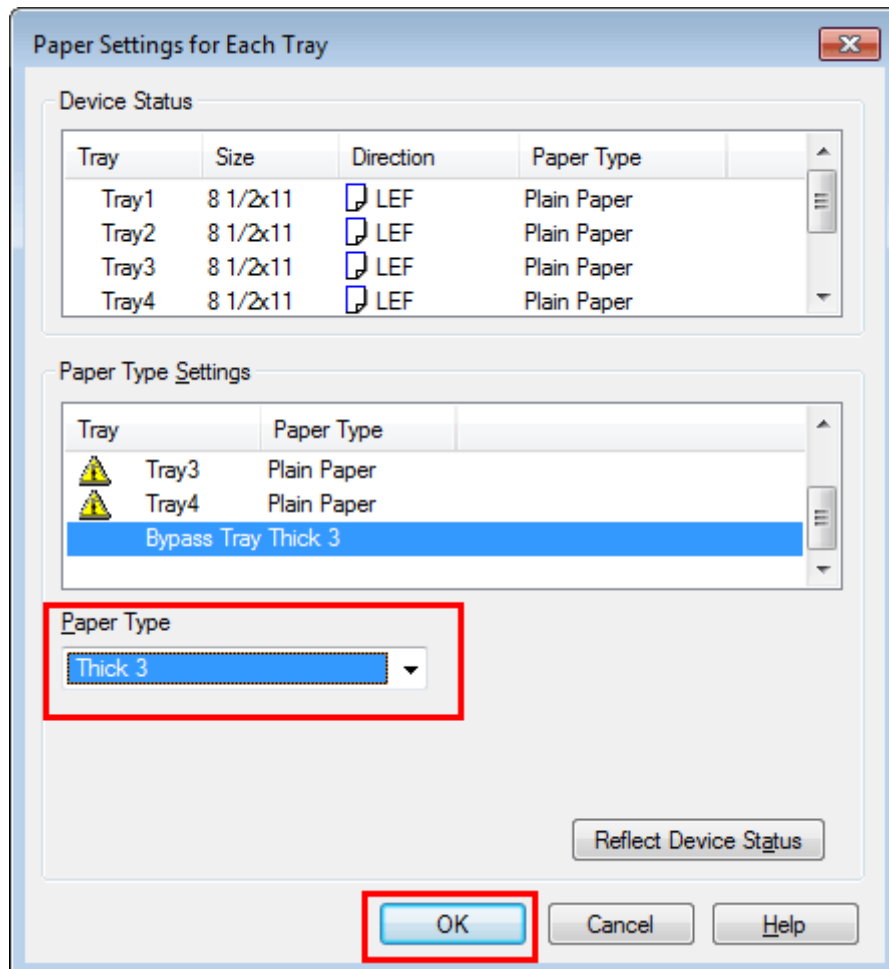


Click [Paper Settings for Each Tray].



Select the relevant paper type from [Paper Type] then click [OK].

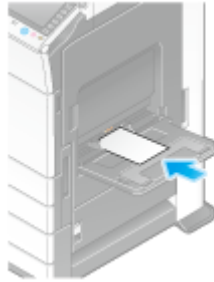
➔ To print on postcards, select [Thick 3] or [Thick 3 (Side2)]. To print on envelopes, select [Envelope].



Click [OK].

Execute printing.

Load envelopes or postcards into the **Bypass Tray** with the print side facing down.



If the paper setting of [Bypass Tray] in this machine is the same as that of [Original Size] in step 3 or [Paper Type] in step 7, printing starts without further setting.

If the paper setting is different, the following screen appears. Tapping [Complete] starts printing.

- ➔ If you cannot tap [Complete], remove the envelopes or postcards loaded in the **Bypass Tray** and reload them, then tap [Complete].

