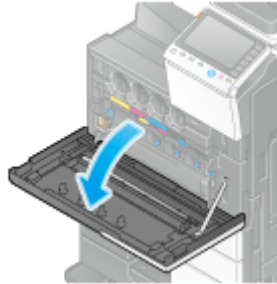


## Cleaning the Electrostatic Charger

---

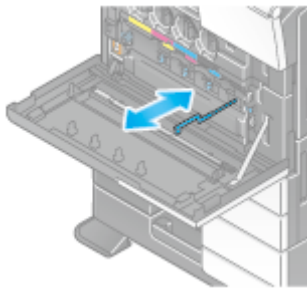
If the **Electrostatic Charger** is dirty, linear smudges may appear on a print image. If this occurs, clean the **Electrostatic Charger** according to the following procedure.

1. Open the **Lower Front Door** or **Front Door** of the machine.



2. Carefully pull out the **Charger Cleaner** towards yourself up to the position at which it stops. Then, carefully press it against the back side.

➔ Repeat this operation for approximately three times.

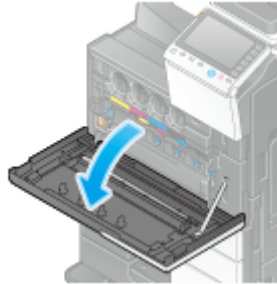


3. Securely press the **Charger Cleaner**, and close the **Lower Front Door** or **Front Door** of the machine.

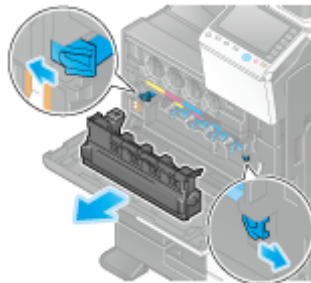
## Cleaning the Print Head Glass

Printing quality deteriorates if the **Print Head Glass** is dirty. If this occurs, clean the **Print Head Glass** according to the following procedure.

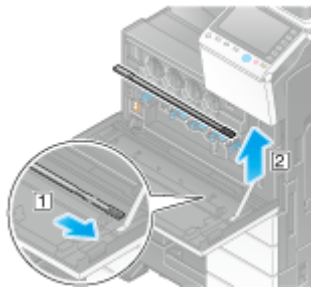
1. Open the **Lower Front Door** or **Front Door** of the machine.



2. Release the **Waste Toner Box Lock Lever**, then remove the **Waste Toner Box**.

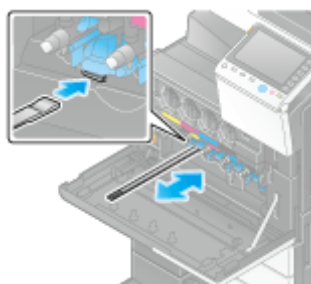


3. Remove the **Printhead Cleaner** from the **Lower Front Door** or **Front Door** of this machine.



4. Slowly insert the **Printhead Cleaner** all the way to the back end of the **Print Head Glass**, and then slowly pull it out.

➡ Repeat this operation approximately three times for all the **Print Head Glass** sections.



5. Mount the **Printhead Cleaner** onto the **Lower Front Door** or **Front Door** of this machine.
6. Install the **Waste Toner Box**.
7. Close the **Lower Front Door** or **Front Door** of the machine.